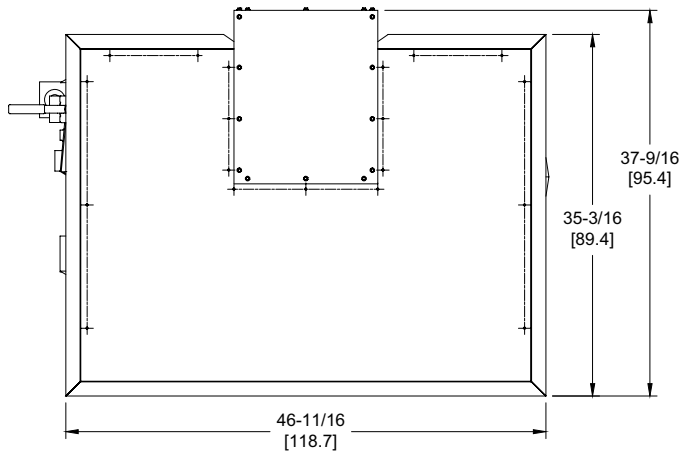


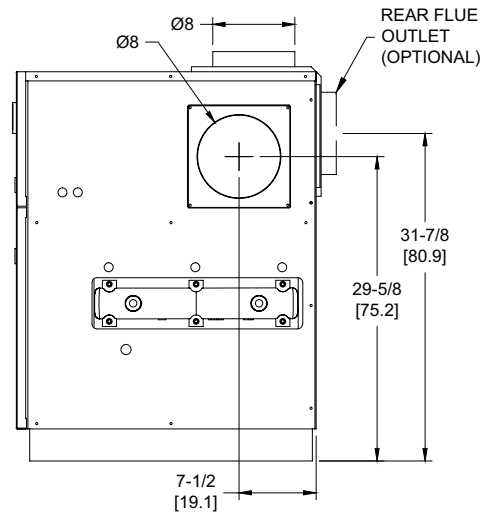
DOMINATOR 750

Category I or Category III Appliance

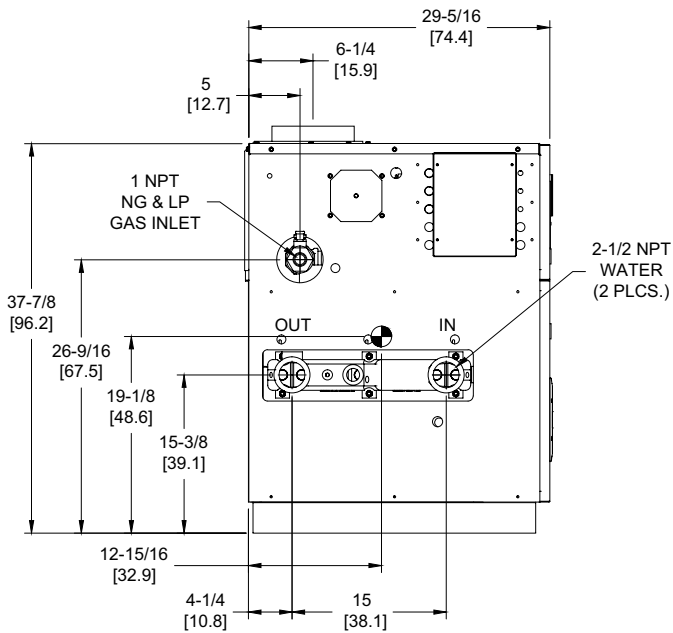
(see Installation and Operation Manual for venting information)



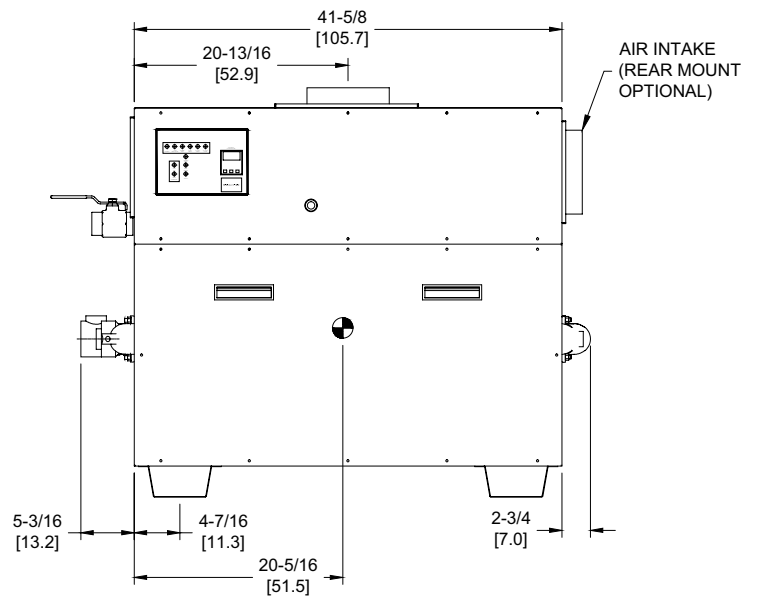
OUTDOOR TOP VIEW



RIGHT VIEW



LEFT VIEW




FRONT VIEW

RSUB-30-E

Boilers & Water Heaters not available for sale in Canada due to NRCan regulations.

Notes:

1. Dimensions are approximate and should not be used to "rough-in" equipment.
2. Dimensions are subject to change without notice.
3. All dimensions are in inches (cm).
4.  Symbol indicates center of gravity.

BOILER CERTIFIED RATINGS & CAPACITIES

Fuel Type	Natural/Propane Gas	Boiler FLA	5.9*
Input BTU/hr.	750,000 / 220 kW	Min. Gas Pressure Required	7" WC**
Output BTU/hr.	630,000 / 185 kW	Max. Gas Pressure Allowed	14" WC
Electrical Requirements	120VAC/ 1 ph/ 60 hz	Operating Weight	573 lbs. / 260 kg.

BOILER / WATER HEATER TRIM & CONTROLS

Main Gas Valve	Honeywell V8944 1"	Pilot Valve	Honeywell VR8205
Firing Valve	Honeywell B200T1033 1"	Air Switch	Cleveland RSS-495
Safety Valve	ASCO L8214G 1"	Blower Motor	1/4 hp - FLA 5.1
Ignition Control	UTC 1003-61A	Relief Valve - DW	3/4" x 3/4" set @ 125 psi
Operating Control	Tekmar BTC-2PA	Relief Valve - DB	3/4" x 3/4" set @ 50 psi
High Limit	Honeywell L4008E	Flow Switch	TACO

A.S.M.E.

ASME Sect IV Htg Surface	77.0 Sq. Ft. / 7.15 Sq. M.	Design Data	Max. 160 psig & 250°F
Water Volume	3.9 gal / 14.9 Liters		

* Add circulator amps.

** For incoming gas pressures lower than 7"WC natural or 11"WC propane, consult factory.


BOILER TEMPERATURE RISE / PRESSURE DROP

20°F / 11.1°C				25°F / 13.9°C				30°F / 16.7°C				35°F / 19.4°C			
Flow Rate		Pressure Drop		Flow Rate		Pressure Drop		Flow Rate		Pressure Drop		Flow Rate		Pressure Drop	
GPM	L/s	Ft	kPa	GPM	L/s	Ft	kPa	GPM	L/s	Ft	kPa	GPM	L/s	Ft	kPa
63.0	4.0	1.35	4.0	50.4	3.2	0.89	2.6	42.0	2.6	0.64	1.9	36.0	2.3	0.48	1.4

WATER HEATER HOURLY RECOVERY CAPACITY (GPH & LPH)

40°F	22°C	60°F	33°C	80°F	44°C	100°F	56°C	120°F	67°C	140°F	78°C
1868	7062	1245	4708	934	3531	747	2825	623	2354	534	2018

Boilers & Water Heaters not available for sale in Canada due to NRCan regulations.

REP FIRM	_____	DOMINATOR 750
SUBMITTED BY	_____	
JOB NAME	_____	
ARCHITECT	_____	
ENGINEER	_____	
CONTRACTOR	_____	
DATE	_____	Category I or Category III Appliance (see Installation and Operation Manual for venting information)
		 RELIABLE. BOLD. INNOVATIVE.
		A Division of Mestek, Inc. Westfield, MA 01085 (833) 265-5371